

Commodity	Open	High	Low	Close	Rs.Chg	% Chg	Spot	Vol	OI	OI Chg	OI STATUS
Soyabean Jun	6930.00	6943.00	6761.00	6908.00	35.00	0.51	7226.00	20295	44205	-2.30	Short Covering
Rmseed Jun	7034.00	7090.00	6991.00	7071.00	73.00	1.04	7325.00	26410	41480	-8.41	Short Covering
Ref.Soyaoil Jun	1372.50	1409.90	1367.60	1404.50	38.90	2.85	1403.40	47080	32440	6.97	Fresh Buying
Cpo Jun	1122.00	1146.00	1108.10	1141.10	18.40	1.64	1155.30	4347	6248	-2.04	Short Covering

Commodity	Daily Levels								Trend	Performance			
	Close	Res - 3	Res - 2	Res - 1	Pivot	Sup - 1	Sup - 2	Sup - 3		1 Week	1 Month	3 Month	1 Year
Soyabean Jun	6908.00	7163.0	7053.0	6981.0	6871.0	6799.0	6689.0	6617.0	Positive	0.68	-3.69	26.23	44.30
Rmseed Jun	7071.00	7210.0	7150.0	7111.0	7051.0	7012.0	6952.0	6913.0	Positive	1.78	-0.62	20.66	36.35
Ref.Soyaoil Jun	1404.50	1462.0	1436.0	1420.0	1394.0	1378.0	1352.0	1336.0	Positive	1.00	0.29	14.55	44.31
Cpo Jun	1141.10	1193.2	1169.6	1155.3	1131.7	1117.4	1093.8	1079.5	Positive	-2.59	-2.93	6.98	44.72



DAILY SOYABEAN SYNOPSIS

Expiry	Open	High	Low	Close	Rs.Chg	% Chg	Spot	Vol	OI	OI Chg	Fut-Spot	OI STATUS
18 JUN 2021	6930.00	6943.00	6761.00	6908.00	35.00	0.51	7226.00	20295	44205	-2.30	-318.00	Short Covering
20 JUL 2021	6675.00	6725.00	6552.00	6698.00	59.00	0.89	7226.00	10185	22715	8.09	-528.00	Fresh Buying
20 AUG 2021	6328.00	6475.00	6321.00	6472.00	61.00	0.95	7226.00	330	2730	8.33	-754.00	Fresh Buying

- Soyabean trading range for the day is 6689-7053.
- Soyabean gains as support seen after update late arrival of southwest monsoon rains in India may delay sowing of crops
- Farmers generally wait for the monsoon to start before they begin planting soybeans.
- According to the third advance estimate, the total production of oilseeds in the country during 2020-21 is estimated to be a record 36.57 million tonnes
- At the Indore spot market in top producer MP, soybean dropped -1 Rupees to 7226 Rupees per 100 kgs.

CHART



TECHNICALS

Simple Moving Average

5 Days	10 Days	20 Days	50 Days	100 Days	200 Days
7077	7129	7266	6737	5769	4957
SELL	SELL	SELL	BUY	BUY	BUY

Exponential Moving Average

5 Days	10 Days	20 Days	50 Days	100 Days	200 Days
7071	7126	7135	6715	6055	5332
SELL	SELL	SELL	BUY	BUY	BUY

Spread

Month	Rate	JUN	JUL	AUG
JUN	6908		-210	-436
JUL	6698			-226
AUG	6472			

DAILY RMSEED SYNOPSIS

Expiry	Open	High	Low	Close	Rs.Chg	% Chg	Spot	Vol	OI	OI Chg	Fut-Spot	OI STATUS
15 JUN 2021	7034.00	7090.00	6991.00	7071.00	73.00	1.04	7325.00	26410	41480	-8.41	-254.00	Short Covering
20 JUL 2021	7005.00	7076.00	6963.00	7056.00	88.00	1.26	7325.00	25430	37660	12.15	-269.00	Fresh Buying
20 AUG 2021	7015.00	7082.00	6976.00	7061.00	82.00	1.17	7325.00	4170	10250	10.45	-264.00	Fresh Buying

- Rmseed trading range for the day is 6952-7150.
- Mustard seed gains as support seen after COOIT was against any reduction in import duties on edible oils
- The decision to ban the adulteration of mustard oil from June 8, the demand for soybean degum and palmolein has weakened.
- U.S. rapeseed production is forecast to reach a record 1.8 million tons on record area and trend yield.
- In Alwar spot market in Rajasthan the prices gained 105 Rupees to end at 7325 Rupees per 100 kg.

CHART



TECHNICALS

Simple Moving Average

5 Days	10 Days	20 Days	50 Days	100 Days	200 Days
7053	7096	7161	6629	6150	5881
SELL	SELL	SELL	BUY	BUY	BUY

Exponential Moving Average

5 Days	10 Days	20 Days	50 Days	100 Days	200 Days
7057	7093	7066	6727	6346	5900
SELL	SELL	SELL	BUY	BUY	BUY

Spread

Month	Rate	JUN	JUL	AUG
JUN	7071		-15	-10
JUL	7056			5
AUG	7061			

DAILY SOYOIL SYNOPSIS

Expiry	Open	High	Low	Close	Rs.Chg	% Chg	Spot	Vol	OI	OI Chg	Fut-Spot	OI STATUS
15 JUN 2021	1372.50	1409.90	1367.60	1404.50	38.90	2.85	1403.40	47080	32440	6.97	1.10	Fresh Buying
20 JUL 2021	1354.00	1395.00	1343.90	1387.40	43.90	3.27	1403.40	18625	12835	47.70	-16.00	Fresh Buying
20 AUG 2021	1334.00	1377.00	1334.00	1371.40	46.80	3.53	1403.40	75	370	15.62	-32.00	Fresh Buying

- Ref.Soya oil trading range for the day is 1352-1436.
- Refined soyoil prices gained after reports that reduction in import duty for edible oil should be postponed.
- Indian farmers are likely to expand their soybean planting area by more than a tenth in 2021
- Edible Oil industry cautioned the government against resorting to any knee-jerk reaction of lowering import duties to cool down domestic prices
- At the Indore spot market in Madhya Pradesh, soyoil was steady at 1403.4 Rupees per 10 kgs.

CHART



TECHNICALS

Simple Moving Average

5 Days	10 Days	20 Days	50 Days	100 Days	200 Days
1397.9	1409.8	1424.3	1369.0	1263.2	1126.5
SELL	SELL	SELL	BUY	BUY	BUY

Exponential Moving Average

5 Days	10 Days	20 Days	50 Days	100 Days	200 Days
1394.7	1405.1	1407.5	1364.5	1284.0	1166.0
SELL	SELL	SELL	BUY	BUY	BUY

Spread

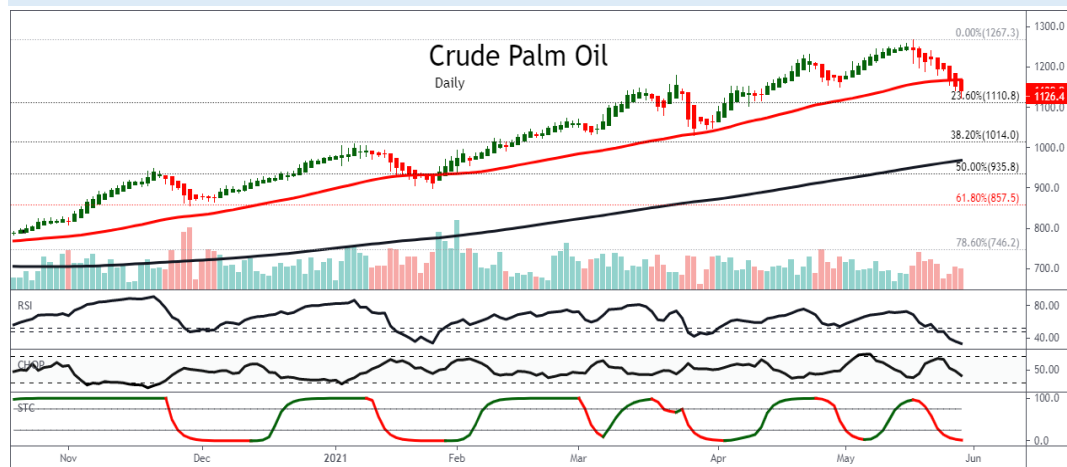
Month	Rate	JUN	JUL	AUG
JUN	1404.5		-17.1	-33.1
JUL	1387.4			-16.0
AUG	1371.4			

DAILY CRUDE PALM OIL SYNOPSIS

Expiry	Open	High	Low	Close	Rs.Chg	% Chg	Spot	Vol	OI	OI Chg	Fut-Spot	OI STATUS
15 JUN 2021	1122.00	1146.00	1108.10	1141.10	18.40	1.64	1155.30	4347	6248	-2.04	-14.20	Short Covering
30 JUL 2021	1093.70	1119.70	1079.00	1116.00	24.40	2.24	1155.30	518	499	52.60	-39.30	Fresh Buying
31 AUG 2021	1064.00	1077.00	1064.00	1069.20	7.20	0.68	1155.30	5	6	20.00	-86.10	Fresh Buying

- CPO trading range for the day is 1093.8-1169.6.
- Crude palm oil gained underpinned by concerns over supply of rival edible oils
- Palm oil plantations will be allowed to operate while manufacturing sector are allowed to operate with reduced capacity.
- Market expects an increase in production and hit by demand and lockdown concerns in Malaysia.
- In spot market, Crude palm oil dropped by -7.2 Rupees to end at 1155.3 Rupees.

CHART



TECHNICALS

Simple Moving Average

5 Days	10 Days	20 Days	50 Days	100 Days	200 Days
1155.2	1173.8	1183.8	1141.7	1076.5	959.2
SELL	SELL	SELL	SELL	BUY	BUY

Exponential Moving Average

5 Days	10 Days	20 Days	50 Days	100 Days	200 Days
1151.6	1166.1	1171.3	1142.6	1083.0	984.9
SELL	SELL	SELL	SELL	BUY	BUY

Spread

Month	Rate	JUN	JUL	AUG
JUN	1141.1		-25.1	-71.9
JUL	1116.0			-46.8
AUG	1069.2			

SOYABEAN PRICE MOVEMENT SINCE 2011

Year						Sowing	Growth	Harvesting					Crop Calendar
	JAN	FEB	MAR	APR	MAY	JUN	JUL	AUG	SEP	OCT	NOV	DEC	
2011	2474.50	2408.00	2338.50	2415.50	2372.00	2294.00	2445.50	2410.50	2090.00	2178.50	2243.50	2514.00	140.00
	4.23	-2.69	-2.89	3.29	-1.80	-3.29	6.60	-1.43	-13.30	4.23	2.98	12.06	5.90
2012	2451.50	2668.50	3085.50	3625.00	3404.00	3968.50	4370.50	3947.50	3201.50	3298.00	3209.50	3203.00	689.00
	-2.49	8.85	15.63	17.49	-6.10	16.58	10.13	-9.68	-18.90	3.01	-2.68	-0.20	27.41
2013	3287.50	3324.50	3641.00	3932.00	3810.00	3670.50	2973.00	3470.00	3531.00	3925.00	3860.00	3819.00	616.00
	2.64	1.13	9.52	7.99	-3.10	-3.66	-19.00	16.72	1.76	11.16	-1.66	-1.06	19.23
2014	3926.50	4165.00	4311.50	4777.50	4592.00	4094.00	3639.00	3358.00	2963.00	3289.00	3300.00	3366.00	-453.00
	2.81	6.07	3.52	10.81	-3.88	-10.84	-11.11	-7.72	-11.76	11.00	0.33	2.00	-11.86
2015	3434.00	3406.00	3458.00	4025.00	3890.00	3329.00	3160.00	3218.00	3429.00	3909.00	3907.00	3880.00	514.00
	2.02	-0.82	1.53	16.40	-3.35	-14.42	-5.08	1.84	6.56	14.00	-0.05	-0.69	15.27
2016	3726.00	3664.00	4010.00	3927.00	3835.00	3740.00	3557.00	3257.00	3235.00	3114.00	3116.00	3029.00	-851.00
	-3.97	-1.66	9.44	-2.07	-2.34	-2.48	-4.89	-8.43	-0.68	-3.74	0.06	-2.79	-21.93
2017	3092.00	3007.00	2941.00	3002.00	2762.00	2925.00	3154.00	3097.00	3033.00	2823.00	3098.00	3118.00	89.00
	2.08	-2.75	-2.19	2.07	-7.99	5.90	7.83	-1.81	-2.07	-6.92	9.74	0.65	2.94
2018	3685.00	3802.00	3756.00	3669.00	3549.00	3566.00	3392.00	3222.00	3233.00	3269.00	3354.00	3399.00	281.00
	18.18	3.18	-1.21	-2.32	-3.27	0.48	-4.88	-5.01	0.34	1.11	2.60	1.34	9.01
2019	3826.00	3637.00	3681.00	3676.00	3718.00	3671.00	3582.00	3825.00	3939.00	3863.00	4072.00	4436.00	1037.00
	12.56	-4.94	1.21	-0.14	1.14	-1.26	-2.42	6.78	2.98	-1.93	5.41	8.94	30.51
2020	4084.00	3708.00	3796.00	3810.00	3830.00	3714.00	3780.00	4116.00	3866.00	4263.00	4415.00	4606.00	170.00
	-7.94	-9.21	2.37	0.37	0.52	-3.03	1.78	8.89	-6.07	10.27	3.57	4.33	3.83
2021	4644.00	5078.00	5993.00	7107.00	6873.00								2267.00
	0.83	9.35	18.02	18.59	-3.29								49.22
Average	1.48	0.61	4.39	6.05	-2.92	-1.85	-1.23	-0.14	-3.80	4.69	1.94	2.82	Average

RMSEED PRICE MOVEMENT SINCE 2011

Year	Growth		Harvesting			Sowing							Crop Calendar
	JAN	FEB	MAR	APR	MAY	JUN	JUL	AUG	SEP	OCT	NOV	DEC	
2011	2993.00	2924.00	2739.00	2806.00	2944.00	2901.00	3017.00	2997.00	2858.00	3104.00	3194.00	3311.00	318.00
	0.70	-2.31	-6.33	2.45	4.92	-1.46	4.00	-0.66	-4.64	8.61	2.90	3.66	10.62
2012	3346.00	3632.00	3925.00	4130.00	3901.00	3990.00	4397.00	4452.00	3927.00	4269.00	4214.00	3544.00	233.00
	1.06	8.55	8.07	5.22	-5.54	2.28	10.20	1.25	-11.79	8.71	-1.29	-15.90	7.04
2013	3492.00	3428.00	3479.00	3505.00	3514.00	3451.00	3182.00	3571.00	3641.00	3878.00	3811.00	3469.00	-75.00
	-1.47	-1.83	1.49	0.75	0.26	-1.79	-7.79	12.23	1.96	6.51	-1.73	-8.97	-2.12
2014	3353.00	3537.00	3504.00	3594.00	3456.00	3595.00	3641.00	3592.00	3693.00	3763.00	3885.00	3524.00	55.00
	-3.34	5.49	-0.93	2.57	-3.84	4.02	1.28	-1.35	2.81	1.90	3.24	-9.29	1.59
2015	3378.00	3406.00	3411.00	3869.00	4306.00	4255.00	4232.00	4317.00	4514.00	4923.00	4897.00	4244.00	720.00
	-4.14	0.83	0.15	13.43	11.29	-1.18	-0.54	2.01	4.56	9.06	-0.53	-13.33	20.43
2016	3877.00	3929.00	4202.00	4472.00	4503.00	4848.00	4875.00	4681.00	4642.00	4498.00	4876.00	3974.00	604.00
	-8.65	1.34	6.95	6.43	0.69	7.66	0.56	-3.98	-0.83	-3.10	8.40	-18.50	14.23
2017	3834.00	3848.00	3908.00	3759.00	3483.00	3609.00	3699.00	3771.00	3739.00	3897.00	4104.00	3939.00	-35.00
	-3.52	0.37	1.56	-3.81	-7.34	3.62	2.49	1.95	-0.85	4.23	5.31	-4.02	-0.88
2018	4187.00	4125.00	4054.00	3795.00	3958.00	4027.00	4214.00	4070.00	4241.00	4170.00	3977.00	3929.00	-10.00
	6.30	-1.48	-1.72	-6.39	4.30	1.74	4.64	-3.42	4.20	-1.67	-4.63	-1.21	-0.25
2019	3983.00	3840.00	3750.00	3744.00	3718.00	3939.00	3950.00	3922.00	3954.00	4306.00	4321.00	4658.00	729.00
	1.37	-3.59	-2.34	-0.16	-0.69	5.94	0.28	-0.71	0.82	8.90	0.35	7.80	18.55
2020	4109.00	4000.00	4118.00	4141.00	4490.00	4650.00	5014.00	5410.00	5468.00	6067.00	5871.00	5817.00	1159.00
	-11.79	-2.65	2.95	0.56	8.43	3.56	7.83	7.90	1.07	10.95	-3.23	-0.92	24.88
2021	5604.00	5536.00	5682.00	6871.00	6998.00								1181.00
	-3.66	-1.21	2.64	20.93	1.85								20.30
Average	-2.47	0.32	1.13	3.81	1.30	2.44	2.29	1.52	-0.27	5.41	0.88	-6.07	Average

SOYOIL PRICE MOVEMENT SINCE 2011

	JAN	FEB	MAR	APR	MAY	JUN	JUL	AUG	SEP	OCT	NOV	DEC	Growth
2011	658.60 4.12	628.40 -4.59	599.65 -4.58	626.50 4.48	660.95 5.50	634.50 -4.00	661.85 4.31	660.75 -0.17	614.10 -7.06	618.20 0.67	634.65 2.66	733.50 15.58	100.95 15.33
2012	683.15 -6.86	712.75 4.33	751.40 5.42	775.70 3.23	735.65 -5.16	761.50 3.51	784.85 3.07	792.20 0.94	663.20 -16.28	686.70 3.54	720.25 4.89	695.80 -3.39	-37.70 -5.52
2013	737.35 5.97	680.85 -7.66	688.10 1.06	719.30 4.53	715.05 -0.59	673.00 -5.88	651.95 -3.13	703.20 7.86	686.20 -2.42	748.85 9.13	713.80 -4.68	698.10 -2.20	2.30 0.31
2014	683.55 -2.08	716.65 4.84	705.45 -1.56	718.50 1.85	676.60 -5.83	693.45 2.49	676.60 -2.43	610.65 -9.75	614.00 0.55	599.85 -2.30	576.80 -3.84	638.05 10.62	-60.05 -8.79
2015	620.10 -2.81	595.40 -3.98	583.60 -1.98	582.50 -0.19	613.00 5.24	588.15 -4.05	574.70 -2.29	574.15 -0.10	598.05 4.16	611.30 2.22	619.65 1.37	614.50 -0.83	-23.55 -3.80
2016	610.10 -0.72	617.40 1.20	642.50 4.07	657.60 2.35	656.95 -0.10	644.10 -1.96	631.30 -1.99	645.95 2.32	661.45 2.40	674.30 1.94	727.65 7.91	706.95 -2.84	92.45 15.15
2017	686.10 -2.95	664.35 -3.17	623.10 -6.21	610.85 -1.97	622.80 1.96	641.90 3.07	657.35 2.41	664.05 1.02	664.70 0.10	686.10 3.22	746.45 8.80	727.50 -2.54	20.55 3.00
2018	743.85 2.25	760.85 2.29	786.85 3.42	764.75 -2.81	776.40 1.52	756.20 -2.60	742.30 -1.84	739.75 -0.34	748.30 1.16	754.85 0.88	719.95 -4.62	730.10 1.41	2.60 0.35
2019	775.80 6.26	756.85 -2.44	728.75 -3.71	740.05 1.55	755.30 2.06	745.10 -1.35	733.90 -1.50	755.05 2.88	764.50 1.25	773.65 1.20	814.40 5.27	933.20 14.59	203.10 26.18
2020	851.20 -8.79	767.60 -9.82	828.00 7.87	787.20 -4.93	785.20 -0.25	799.10 1.77	864.70 8.21	892.90 3.26	904.10 1.25	963.40 6.56	1072.30 11.30	1190.10 10.99	256.90 30.18
2021	1105.50 -7.11	1192.40 7.86	1269.50 6.47	1360.70 7.18	1365.60 0.36								175.50 15.88
Average	-1.16	-1.01	0.93	1.39	0.43	-0.90	0.48	0.79	-1.49	2.70	2.90	4.14	Average

CPO PRICE MOVEMENT SINCE 2011

	JAN	FEB	MAR	APR	MAY	JUN	JUL	AUG	SEP	OCT	NOV	DEC	Growth
2011	559.50 2.70	539.80 -3.52	510.70 -5.39	521.20 2.06	535.80 2.80	478.40 -10.71	487.40 1.88	490.20 0.57	480.80 -1.92	475.70 -1.06	508.90 6.98	545.40 7.17	0.60 0.11
2012	514.20 -5.72	536.20 4.28	592.30 10.46	621.50 4.93	585.90 -5.73	566.40 -3.33	564.40 -0.35	551.60 -2.27	446.20 -19.11	425.20 -4.71	423.20 -0.47	417.90 -1.25	-127.50 -23.38
2013	438.20 4.86	450.80 2.88	454.90 0.91	464.90 2.20	480.50 3.36	502.20 4.52	496.60 -1.12	568.70 14.52	532.40 -6.38	557.20 4.66	558.30 0.20	540.20 -3.24	122.30 29.27
2014	524.00 -3.00	590.00 12.60	569.70 -3.44	567.70 -0.35	524.90 -7.54	535.00 1.92	539.10 0.77	439.60 -18.46	474.50 7.94	457.20 -3.65	439.50 -3.87	460.60 4.80	-79.60 -14.74
2015	425.00 -7.73	466.10 9.67	434.40 -6.80	435.40 0.23	456.80 4.92	451.40 -1.18	417.60 -7.49	360.50 -13.67	425.70 18.09	400.80 -5.85	382.40 -4.59	411.00 7.48	-49.60 -10.77
2016	432.50 5.23	481.90 11.42	532.20 10.44	564.00 5.98	537.00 -4.79	506.80 -5.62	524.70 3.53	559.10 6.56	581.60 4.02	514.90 -11.47	554.70 7.73	582.70 5.05	171.70 41.78
2017	587.50 0.82	544.90 -7.25	538.80 -1.12	516.80 -4.08	512.70 -0.79	490.80 -4.27	488.70 -0.43	518.20 6.04	547.80 5.71	545.30 -0.46	589.60 8.12	554.60 -5.94	-28.10 -4.82
2018	560.60 1.08	587.50 4.80	651.80 10.94	642.60 -1.41	653.10 1.63	643.40 -1.49	616.80 -4.13	599.50 -2.80	594.00 -0.92	593.50 -0.08	500.70 -15.64	511.60 2.18	-43.00 -7.75
2019	569.40 11.30	550.10 -3.39	525.90 -4.40	529.70 0.72	519.30 -1.96	515.80 -0.67	513.60 -0.43	522.20 1.67	546.60 4.67	587.90 7.56	680.00 15.67	795.20 16.94	283.60 55.43
2020	771.80 -2.94	648.60 -15.96	663.50 2.30	609.00 -8.21	658.20 8.08	646.20 -1.82	731.80 13.25	764.90 4.52	754.90 -1.31	817.50 8.29	883.70 8.10	977.80 10.65	182.60 22.96
2021	969.30 -0.87	1059.10 9.26	1076.30 1.62	1155.70 7.38	1122.70 -2.86								144.90 14.82
Average	0.52	2.25	1.41	0.86	-0.26	-2.27	0.55	-0.33	1.08	-0.68	2.22	4.38	Average

KEDIA ADVISORY

KEDIA STOCKS & COMMODITIES RESEARCH PVT LTD.
Mumbai. INDIA.

For more details, please contact:
Mobile: +91 9323406035 / 9320096333 / 9619551022
Email: info@kediaadvisory.com
URL: www.kediaadvisory.com
SEBI REGISTRATION NUMBER - INH000006156

General Disclaimers: This Report is prepared and distributed by Kedia Stocks & Commodities Research Pvt Ltd. for information purposes only. The recommendations, if any, made herein are expression of views and/or opinions and should not be deemed or construed to be neither advice for the purpose of purchase or sale through KSCRPL nor any solicitation or offering of any investment /trading opportunity. These information / opinions / views are not meant to serve as a professional investment guide for the readers. No action is solicited based upon the information provided herein. Recipients of this Report should rely on information/data arising out of their own investigations. Readers are advised to seek independent professional advice and arrive at an informed trading/investment decision before executing any trades or making any investments. This Report has been prepared on the basis of publicly available information, internally developed data and other sources believed by KSCRPL to be reliable. KSCRPL or its directors, employees, affiliates or representatives do not assume any responsibility for, or warrant the accuracy, completeness, adequacy and reliability of such information / opinions / views. While due care has been taken to ensure that the disclosures and opinions given are fair and reasonable, none of the directors, employees, affiliates or representatives of KSCRPL shall be liable for any direct, indirect, special, incidental, consequential, punitive or exemplary damages, including lost profits arising in any way whatsoever from the information / opinions / views contained in this Report. The possession, circulation and/or distribution of this Report may be restricted or regulated in certain jurisdictions by appropriate laws. No action has been or will be taken by KSCRPL in any jurisdiction (other than India), where any action for such purpose(s) is required. Accordingly, this Report shall not be possessed, circulated and/ or distributed in any such country or jurisdiction unless such action is in compliance with all applicable laws and regulations of such country or jurisdiction. KSCRPL requires such recipient to inform himself about and to observe any restrictions at his own expense, without any liability to KSCRPL. Any dispute arising out of this Report shall be subject to the exclusive jurisdiction of the Courts in India.